

Darbepoetin alfa: A unique erythropoiesis-stimulating agent with better action profile than erythropoietin alfa!

Darbepoetin alfa has:

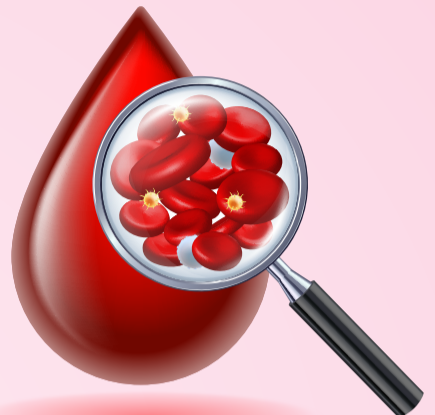
3-fold longer half-life¹



Decreased clearance¹



Similar mechanism for erythropoiesis¹



01

Efficacy of darbepoetin alfa, when administered at reduced dose frequency, is similar to erythropoietin.²

02

Darbepoetin alfa is well tolerated and has a similar safety profile to erythropoietin.²

03

Dialysis dependent patients treated with darbepoetin alfa could effectively maintain their hemoglobin levels in the target therapeutic ranges.³



Know More About Cresp! >


Cresp[®]
 Darbepoetin alfa 25/40/60µg

References

1. Mehta KS, Sinha SD, Vamsi B, *et al.* Darbepoetin alfa versus erythropoietin alfa for treatment of renal anemia in patients with chronic kidney disease at the pre-dialysis stage: A randomized non-inferiority trial. *J Assoc Physicians India.* 2019;67(1):62–66. 2. Chen N, Xing C, Niu J, *et al.* Darbepoetin alfa injection versus epoetin alfa injection for treating anemia of Chinese hemodialysis patients with chronic kidney failure: A randomized, open-label, parallel-group, non-inferiority Phase III trial. *Chronic Dis Transl Med.* 2022;8(1):59–70. 3. Sinha SD, Bandi VK, Bheemareddy BR, *et al.* Efficacy, tolerability and safety of darbepoetin alfa injection for the treatment of anemia associated with chronic kidney disease (CKD) undergoing dialysis: a randomized, phase-III trial. *BMC Nephrol.* 2019;20(1):90.

LMRC Code: GGI-CO-A1-AQS-DCVN-BANNERS-K23-0695

For the use of a Registered Medical Practitioner, Hospital or Laboratory only.

All content including: text, images, audio, or other formats were created for medical educational purposes only. Offerings for continuing education are clearly identified and the appropriate target audience is identified. This communication is restricted for the use of HCPs and must not be shared in public domain. The opinions expressed in this video are solely the views of the speaker. The presentation may contain off label usage of drug(s) aimed at educational purpose only. Dr. Reddy's Laboratories Ltd including but not limited its Affiliates strictly does not recommend any off label usage of its marketing products. Prior to treatment kindly refer to the latest prescribing information approved by the local authorities. No part of this content may be used, reproduced, transmitted or stored in any form without the written permission of Dr. Reddy's.